



3-Phase 4-Wire Power Line Filter

3-Phase 4-Wire Power Line Filter

1. Product Description

Our 3-phase 4-wire Power Line Filter is designed to provide exceptional electromagnetic interference (EMI) suppression for industrial applications. Its advanced filtering technology ensures smooth operation by reducing noise and protecting sensitive equipment. This filter is ideal for environments requiring high-performance power systems, such as automation, motor drives, and uninterruptible power supplies (UPS). With a robust, space-saving design, it offers easy installation and reliable performance across various sectors, including industrial, commercial, and energy systems. Its efficient filtering capabilities contribute to enhanced system stability and equipment longevity.



2. Typical Applications

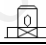

- Industrial equipment and power systems with four-wire configurations, providing reliable EMI filtering and performance
- Photovoltaic systems and industrial applications
- 3-phase motors
- UPS / Switch-mode power supplies
- Industrial automation equipment

3. Product Features

- Prevents interference voltage
- Easy installation with wiring, features a safety cover to prevent accidental contact
- Customizable products to meet specific customer requirements
- Versatile and general-purpose

- General-purpose and space-saving
- Certification: CE approved (designed according to UL939, CSA C22.2 No.8, IEC/EN 60939, CQC GB 15288/GB 15287-2008 standards)

4. Technical Data

| Type | Rated Current (A) | Rated Voltage | Rated Frequency | I _{Leakage} (≤mA) | Test Voltage (2s) | Dim. | Output | Climate Category |
|-------------|-------------------|---------------|-----------------|----------------------------|--|-------|---|------------------|
| ND4107-5Q | 5 | 250/440V AC | 50/60Hz | 1 250VAC/ 50Hz | Line/Line 1500VDC Line/Ground 2250VDC | Fig 1 |  | 25/85/21 |
| ND4109-10S | 10 | | | | | Fig 2 |  | |
| ND4109-20S | 20 | | | | | Fig 3 | | |
| ND4109-30S | 30 | | | | | Fig 4 | | |
| ND4110-50S | 50 | | | | | | | |
| ND4111-80S | 80 | | | | | | | |
| ND4111-100S | 100 | | | | | | | |

5. Outline Drawing (mm)

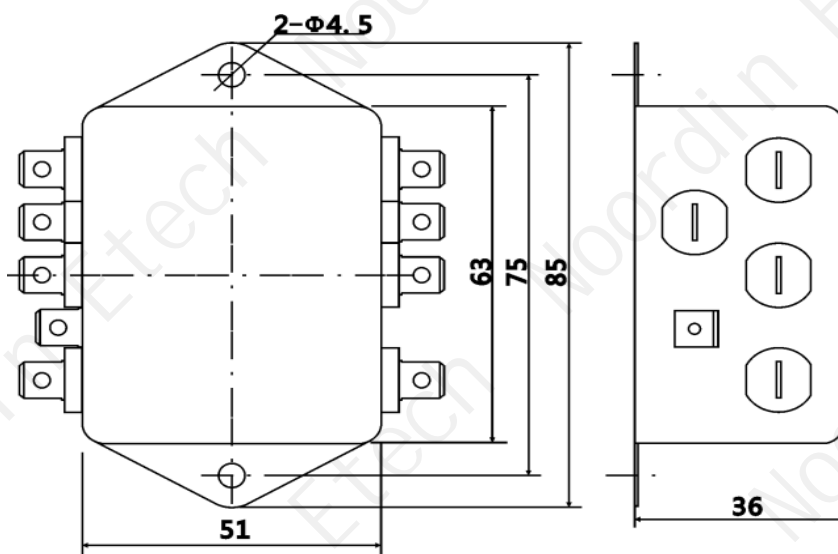


Fig 1

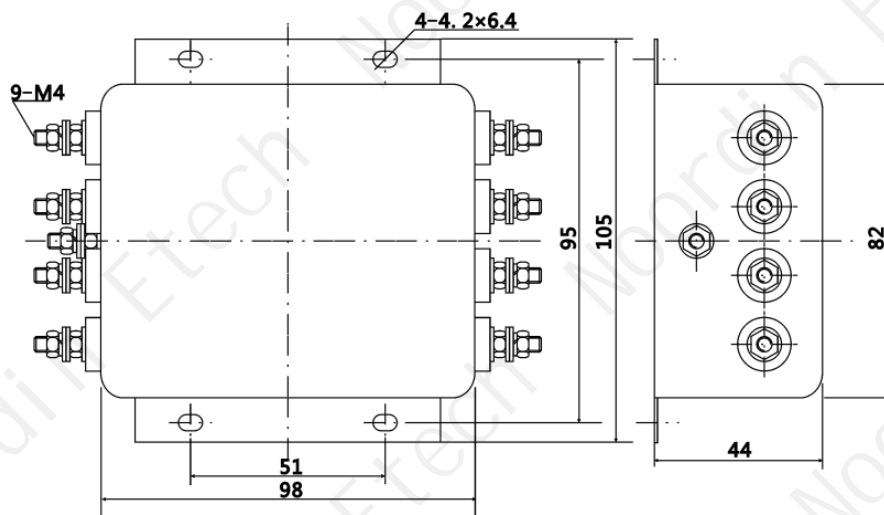


Fig 2

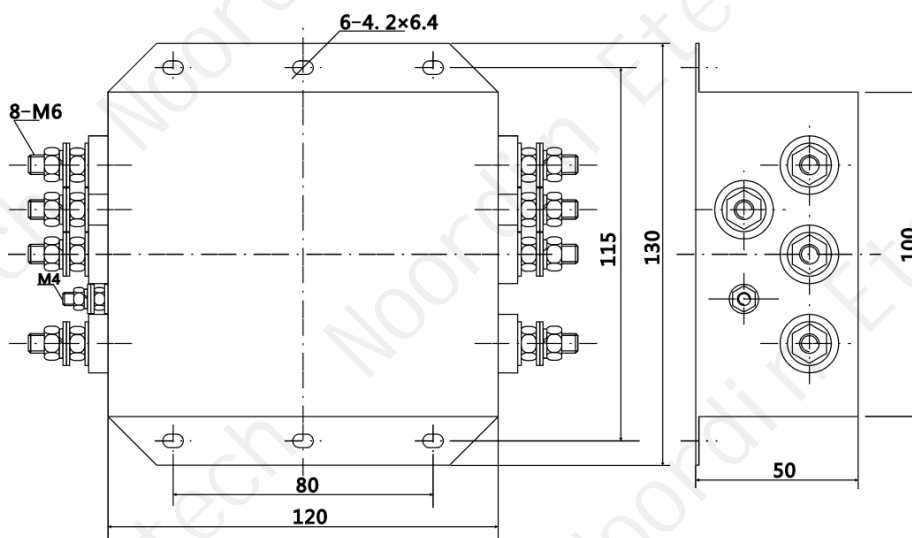


Fig 3

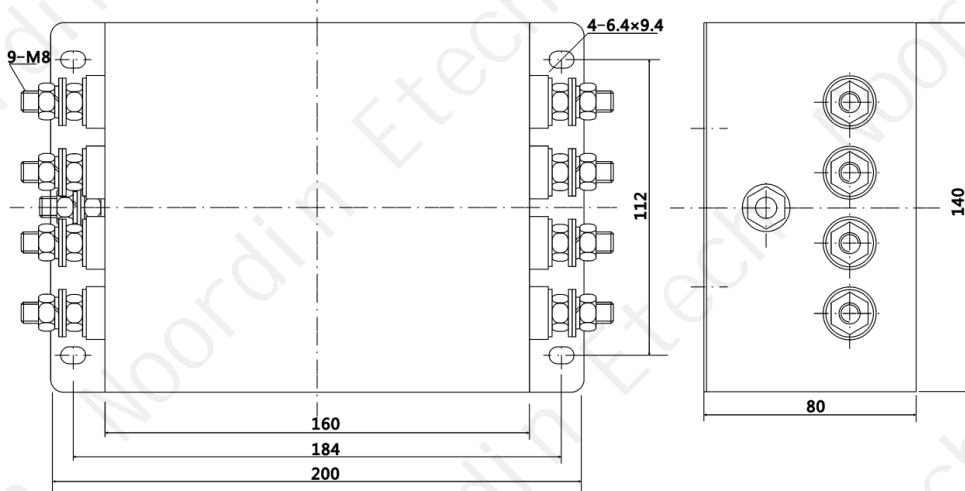
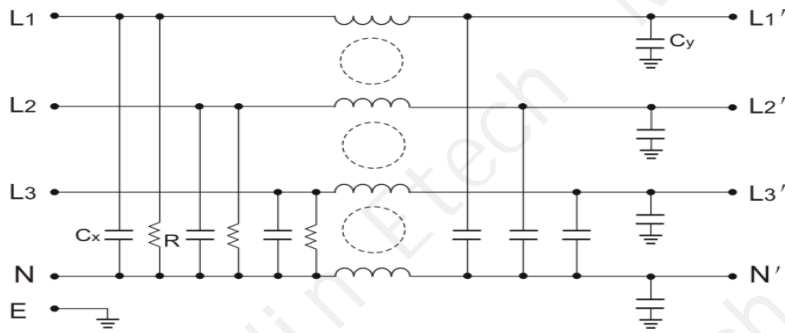


Fig 4

6. Circuit Diagrams



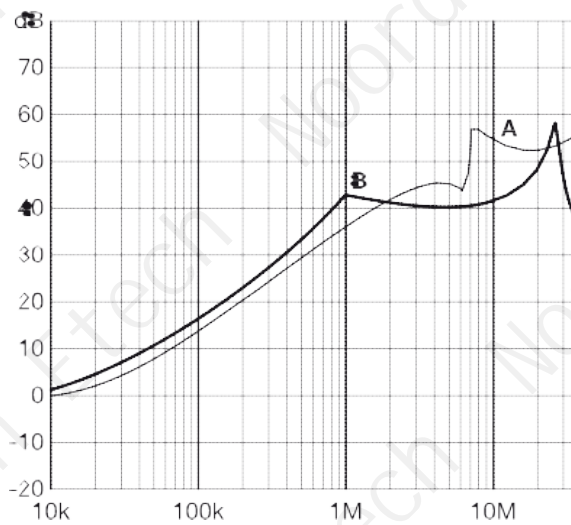
7. Insertion Loss

Insertion loss measured in 50Ω/50Ω system, as IEC/CISPR No. 17

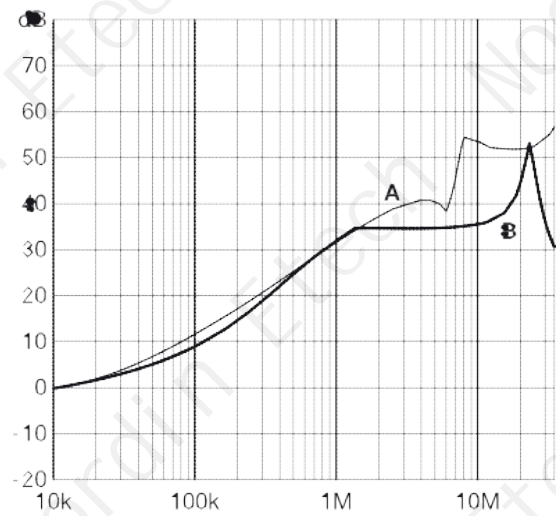
A=Differential mode

B=Common Mode

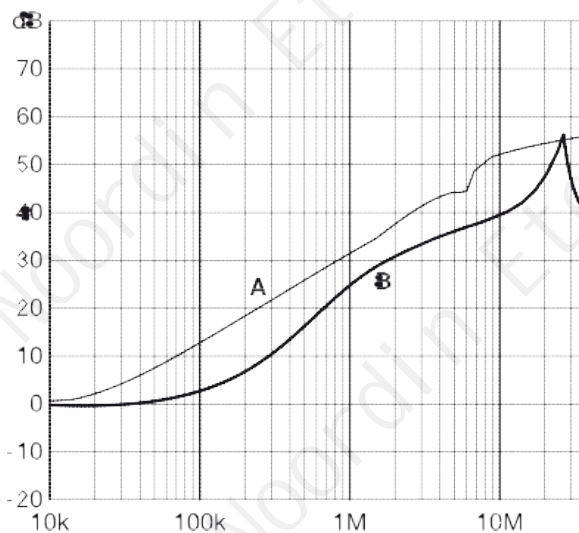
5 to 20A Type



30 to 50A Type



75 to 100A Type



Contact Us

No. 11 Shunyuan Road, Xinbei District, Changzhou, Jiangsu Province, China

+86 0519 86815058

sales@noordin.cn, cyt@noordin.cn, bjw@noordin.cn